

Newsome Family Farm

390 ± Acres

Warren / Glascock County, Georgia

Description: Farm, Timberland Investment, Recreation

This property offers a nice balance between open farmland and timberland with substantial value. Fenced pastures make up the majority of the property's acreage. Pines and hardwoods located throughout offer forage and cover for a wide range of wildlife. Paved road frontage on Georgia Highway 80 offers easy access.

Location: Warren & Glascock Counties. Approximately 10 miles South of Warrenton and 10 miles North of Wrens on GA Hwy. 80



Acreage Breakdown:

| | |
|------------------|--------------------------|
| 228 acres | Pasture/Open Land |
| 160 acres | Timberland |
| 2 acres | Farm Pond |
| 390 acres | TOTAL |



Price: \$2,425 per Acre

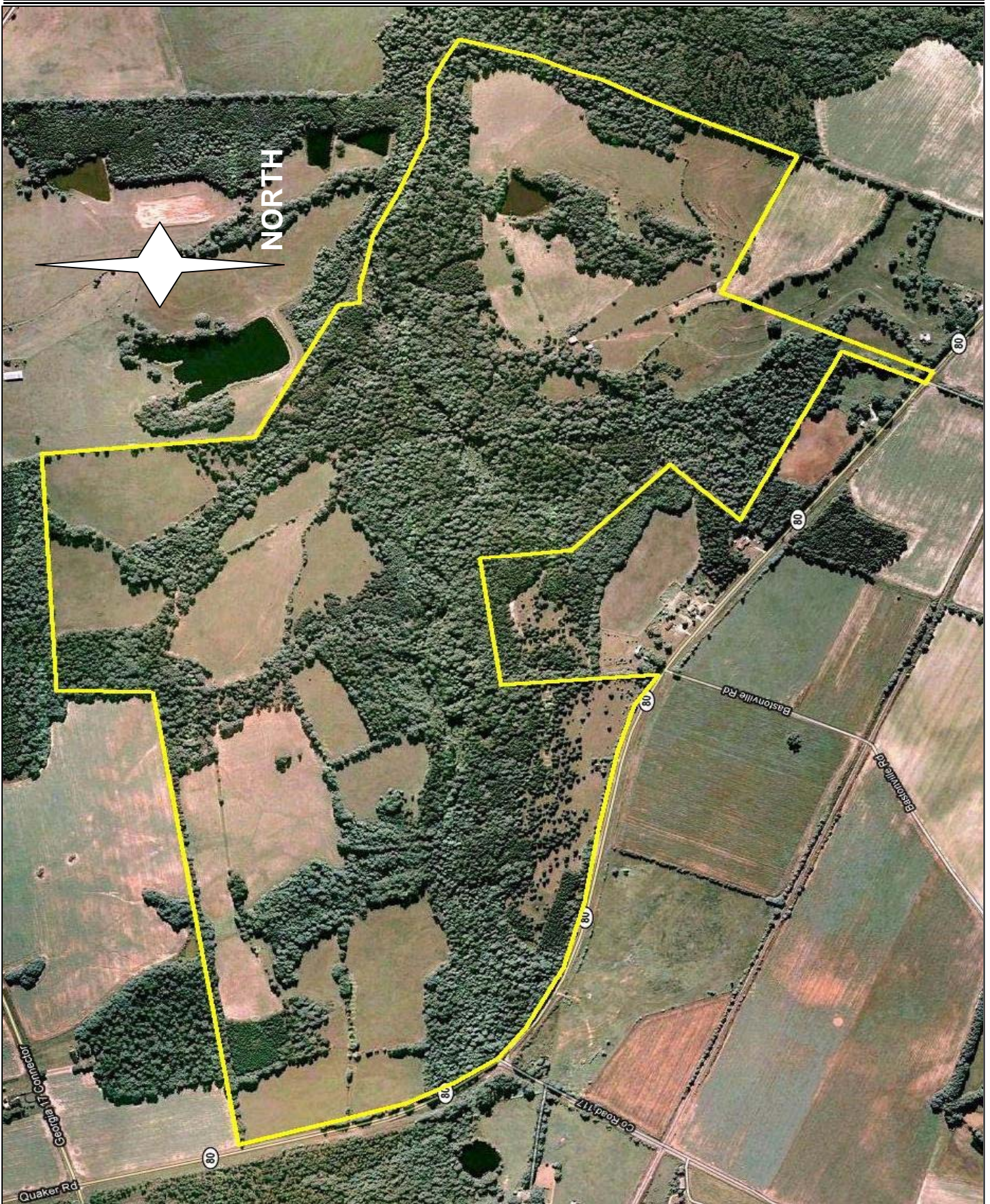
Contact: PineSouth Land Company, Inc.
Dennis Coxwell or Chad Mosley
(706) 465-2972 (888) 710-0072

All information contained herein is deemed accurate and reliable, however, PineSouth Land Company, nor any representative, shall be held responsible for any errors and/or omissions.

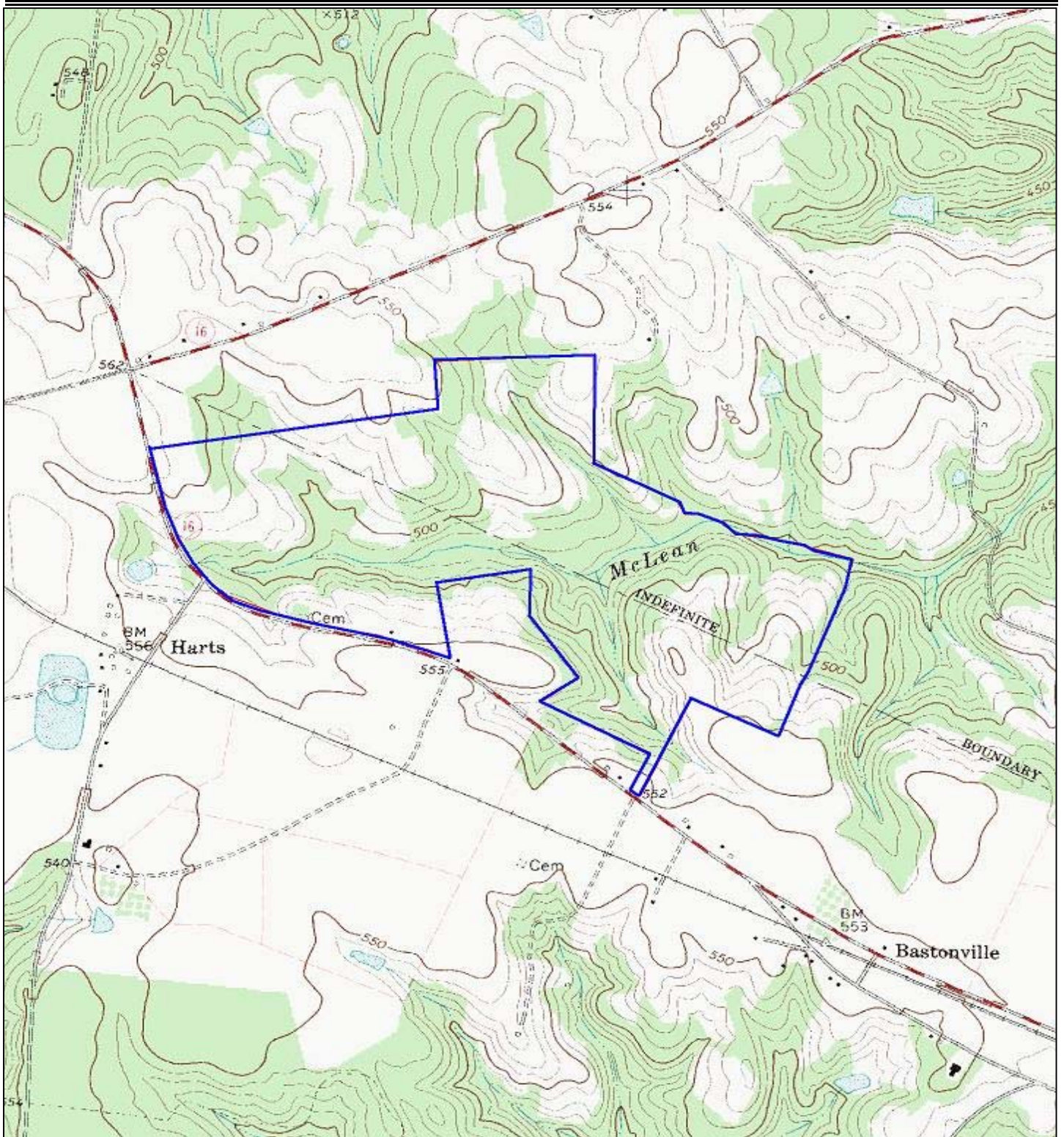
Newsome Family Farm
390 ± Acres
Warren / Glascock County, Georgia



Newsome Family Farm
390 ± Acres
Warren / Glascock County, Georgia



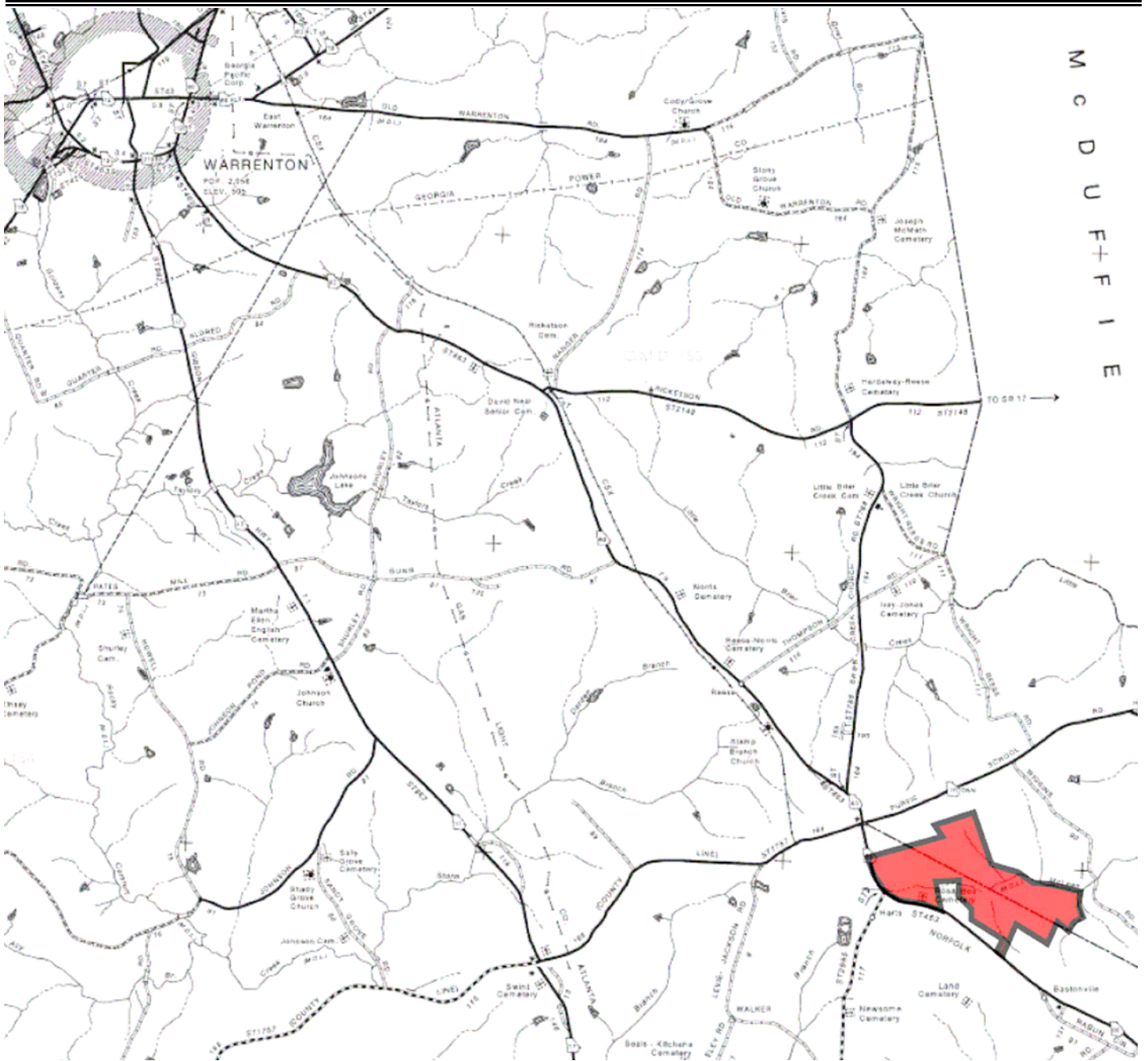
Newsome Family Farm
390 ± Acres
Warren / Glascock County, Georgia



Newsome Family Farm

390 ± Acres

Warren / Glascock County, Georgia



Newsome Family Farm

390 ± Acres

Warren / Glascock County, Georgia

